

LIMITED WARRANTY - PEDESTAL SUMP PUMPS:

Superior Pump warrants the products specified in this warranty to be free from defects in material or workmanship for one (1), three (3) or five (5) years from date of purchase depending on model purchased. During the time period and subject to the terms and conditions, Superior Pump will repair or replace to the original user or consumer any portion of this product which proves to be defective due to materials or workmanship. At all times the manufacturer shall have and possess the sole right and option to determine whether to repair or replace defective equipment, parts, or components. The manufacturer has the option to inspect any product returned under warranty to confirm that the warranty applies before repair or replacement under warranty is approved. This warranty sets forth the manufacturer's sole obligation and purchaser's exclusive remedy for defective product. Contact Superior Pump for warranty consideration.

WARRANTY PERIOD - PRODUCTS:

If, within the duration of product use by the original user, this product proves to be defective due to materials or workmanship, the product shall be repaired or replaced at Superior Pump's option, subject to the terms and conditions set forth in this warranty statement. Proof of purchase is required for warranty consideration. In the absence of suitable proof of the purchase date, the effective period of this warranty is 12 months from the product's date of manufacture.

LABOR, ETC. COSTS:

Superior Pump shall IN NO EVENT be responsible or liable for the cost of field labor or other charges incurred by any customer in removing and/or affixing any product, part, or component thereof.

PRODUCT IMPROVEMENTS:

Superior Pump reserves the right to change or improve its products or any portions thereof without being obligated to provide such a change or improvement for units sold and/or shipped prior to such change or improvement.

GENERAL TERMS AND CONDITIONS:

This warranty shall not apply to damage due to acts of God, normal wear and tear, normal maintenance services and the parts used in connection with such service, lightning or conditions beyond the control of Superior Pump, nor shall it apply to products which, in the sole judgment of Superior Pump, have been subject to negligence, abuse, accident, misapplication, tampering, alteration; nor due to improper installation, operation, maintenance or storage; nor to excess of recommended maximums as set forth in the instructions. Warranty will be VOID if any of the following conditions are found:

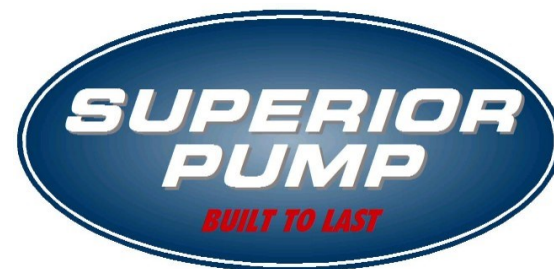
1. Product is used for purposes other than those for which it was designed and manufactured
2. Product not installed in accordance with applicable codes, ordinances, and good trade practices
3. Product connected to voltage other than indicated on nameplate or labels
4. Pump exposed to but not limited to the following: sand, gravel, cement, grease, plaster, mud, tar, oil, gasoline, solvents or other abrasive or corrosive substances
5. Pump has been used for pumping liquids above 120°F (Models 92333 & 92553) or 180°F (Models 92301 & 92551)
6. Pump allowed to operate dry (liquid supply cut off)

DISCLAIMER:

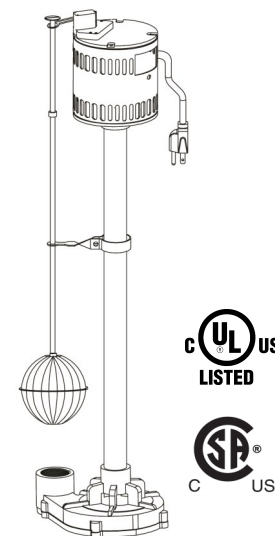
Any oral statements about the product made by the seller, Superior Pump, the representatives, or any other parties do not constitute warranties, shall not be relied upon by the user, and are not part of the contract for sale. Seller's and Superior Pumps only obligation, and buyer's only remedy, shall be the replacement and/or repair by Superior Pump of the product as described above. NEITHER SELLER NOR SUPERIOR PUMP SHALL BE LIABLE FOR ANY INJURY, LOSS OR DAMAGE, DIRECT, INCIDENTAL OR CONSEQUENTIAL (INCLUDING, BUT NOT LIMITED TO, INCIDENTAL OR CONSEQUENTIAL DAMAGES FOR LOST PROFITS, LOST SALES, INJURY TO PERSON OR PROPERTY, OR ANY OTHER INCIDENTAL OR CONSEQUENTIAL LOSS), ARISING OUT OF THE USE OR THE INABILITY TO USE THE PRODUCT, AND THE USER AGREES THAT NO OTHER REMEDY SHALL BE AVAILABLE TO IT. Before using, the user shall determine the suitability of the product for his/her intended use, and user assumes all risk and liability whatsoever in connection therewith.

THE WARRANTY AND REMEDY DESCRIBED IN THIS LIMITED WARRANTY IS AN EXCLUSIVE WARRANTY AND REMEDY AND IS IN LIEU OF ANY OTHER WARRANTY OR REMEDY, EXPRESSED OR IMPLIED, WHICH OTHER WARRANTIES AND REMEDIES ARE HEREBY EXPRESSLY EXCLUDED, INCLUDING BUT NOT LIMITED TO ANY IMPLIED WARRANTY OF MERCHANTABILITY OR FITNESS FOR A PARTICULAR PURPOSE, TO THE EXTENT EITHER APPLIES TO A PRODUCT SHALL BE LIMITED IN DURATION TO THE PERIODS OF THE EXPRESSED WARRANTIES GIVEN ABOVE.

Some states and countries do not allow the exclusion or limitations on how long an implied warranty lasts or the exclusion or limitation of incidental or consequential damages, so the above exclusion or limitations may not apply to you. This warranty gives you specific legal rights, and you may also have other rights which vary from state to state.



INSTALLATION & OPERATION MANUAL PEDESTAL SUMP PUMP Models: 92333, 92301, 92553, 92551



Safety Guidelines

Carefully read, understand and follow all safety instructions in this manual.

! This is the safety alert symbol. When you see this symbol, look for one of the following signal words.

DANGER Indicates a hazardous situation which, if not avoided, will result in death or serious injury.

WARNING Indicates a hazardous situation which, if not avoided, could result in death or serious injury.

CAUTION Indicates a hazardous situation which, if not avoided, could result in minor or moderate injury.

NOTICE Indicates important information, that if not followed, may result in damage to the equipment.

Safety Information

Read these warnings carefully. Know the application and limitations of this pump. Failure to follow these warnings could result in serious bodily injury and/or property damage.

DANGER RISK OF ELECTRICAL SHOCK. This pump is supplied with a grounding conductor and grounding type attachment plug. To reduce the risk of electric shock, be certain that it is connected only to a properly grounded, grounding type receptacle. For added safety, it is highly recommended to connect this pump to a GFCI (Ground Fault Circuit Interrupter) outlet.

DANGER RISK OF ELECTRIC SHOCK. Disconnect and lockout power supply before removing old pump or installing or servicing this pump.

DANGER RISK OF ELECTRIC SHOCK. The motor on this pump is not submersible. **DO NOT** submerge the motor or allow the motor to be exposed to water. Personal injury or death from electric shock could result.

WARNING This pump is designed to pump clear water. Do not use this pump to pump chemicals, flammable liquids, sewage or corrosive liquids. You could injure yourself and the pump will fail. Pumping these types of liquids voids the warranty.

WARNING Keep all electrical connections away from wet and moist environments. Wet connections can cause electrical shock resulting in personal injury or death. Do not plug in while standing on a wet floor or in water. If the floor is wet, disconnect power to the pump before walking on floor.

WARNING Make certain that the electrical outlet is within the reach of the power supply cord. **DO NOT USE AN EXTENSION CORD.** Extension cords that are too long or too light do not deliver sufficient voltage to the pump motor. More importantly, they present a safety hazard if the insulation were to become damaged or the connection end were to fall into the water.

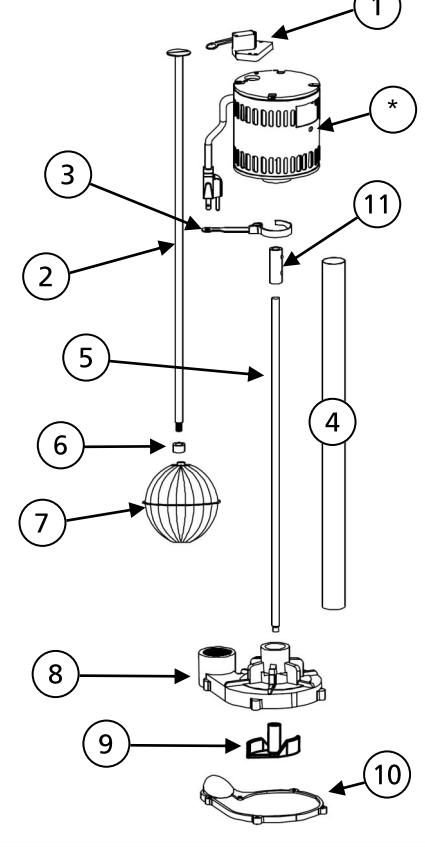
WARNING All wiring must be performed by a qualified electrician.

NOTICE Make sure the sump basin is clear of rocks, sand & debris. Debris can damage or clog the pump which could result in flooding.

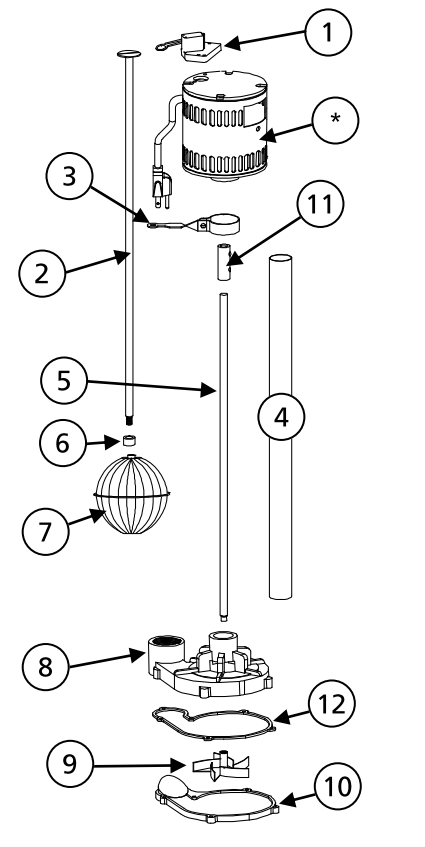
WARNING Do not use this pump for potable/drinking water. Use only in applications for which the pump is designed for.

Replacement Parts

Models 92333 & 92553



Models 92301 & 92551



Ref #	Description	92333	92301	92553	92551
1	Switch	99100	99100	99100	99100
2	Float Rod	99129	99131	99127	99131
3	Float Rod Guide	99126	99128	99126	99128
4	Column	99119	99124	99121	99124
5	Motor Drive Shaft	99113	99114	99123	99114
6	Grommet	99130	99130	99130	99130
7	Float Ball	99132	99134	99130	99134
8	Base	99146	99148	99145	99148
9	Impeller	99116	99118	99116	99118
10	Volute	99140	99142	99140	99142
11	Motor shaft coupling	99112	99112	99112	99112
12	Gasket	n/a	99138	n/a	99138

*If motor fails, replace entire pump

Troubleshooting

PROBLEM	POSSIBLE CAUSES	HOW TO CORRECT
If the pump does not start or run	Pump is not plugged in, switch or breaker is off	Plug pump in or turn on switch/breaker
	Check for blown fuses or tripped circuit breakers or tripped GFCI outlets	Replace fuse, reset breaker, reset GFCI outlet
	Float switch is defective	Check and replace if necessary
	Motor thermal protector tripped	Allow pump to cool. Pump will reset automatically
	Float is stuck or obstructed	Remove obstruction, adjust float rod guide or position the pump so it will not become stuck
The pump starts and stops too often	Backflow of water from discharge hose/pipe	Install or replace check valve
	Float is out of adjustment	Adjust grommet on float rod
If the pump runs but moves little or no water	Clogged discharge hose/pipe	Remove clog
	Frozen discharge hose/pipe	Allow hose/pipe to thaw
	Low line voltage	Check wire size and increase if necessary
	Check valve is stuck in the closed position	Inspect, repair or replace if necessary
	Check valve is installed backwards	Make sure valve is installed in the correct direction of flow
	Worn, damaged or clogged pump parts	Inspect for wear, damage or clog and clean or replace if necessary
	Discharge head exceeds pump capacity	If pumping height is over 25', the pump will not move water. See performance chart on page 5
Pump does not shut off	Float is obstructed or stuck	Remove obstruction, adjust float rod guide or reposition pump
	Defective Switch	Replace switch

Safety Information (Continued)

⚠ WARNING DO NOT UNDER ANY CIRCUMSTANCES REMOVE THE GROUND PIN. The 3-prong plug must be inserted into a mating 3-prong grounded receptacle. If the installation does not have such a receptacle, it must be changed to the proper type, wired and grounded in accordance with the National Electrical Code and all applicable local codes and ordinances

⚠ CAUTION Do not handle this pump with wet hands or while standing on wet or damp surfaces or in water

⚠ CAUTION This pump motor is equipped with an automatic resetting thermal protector and may restart unexpectedly.

⚠ WARNING According to the state of California (Prop 65), this product contains chemicals known to the state of California to cause cancer and birth defects or other reproductive harm.

⚠ CAUTION If a flexible discharge hose is used, make sure the pump is secured in the basin to prevent movement. Failure to secure the pump could result in flooding from switch malfunction.

Description

This Pedestal Sump Pump is designed for use in residential sump basins. The permanent split capacitor motor is equipped with a thermal overload protector for safety. This unit is equipped with a 3-prong grounding type power cord and plug. The vertical style float switch is fully adjustable

Specifications

Model	92333	92301	92553	92551
HP	1/3	1/3	1/2	1/2
Volts	120 volt AC	120 volt AC	120 volt AC	120 volt AC
Amps	2.76	2.76	3.06	3.06
Hz	60 Hz	60 Hz	60 Hz	60 Hz
Phase	1	1	1	1
Motor Duty	Continuous	Continuous	Continuous	Continuous
Circuit Requirements	15 Amp minimum	15 Amp minimum	15 Amp minimum	15 Amp minimum
Discharge Size	1-1/4" FNPT	1-1/2" FNPT	1-1/2" FNPT	1-1/2" FNPT
Max. Solids Handling	3/8"	3/8"	3/8"	3/8"
Max. Liquid Temperature	120°F	180°F	120°F	180°F
Power Cord Length	10'	10'	10'	10'
Float Switch	Vertical (Adjustable)	Vertical (Adjustable)	Vertical (Adjustable)	Vertical (Adjustable)
Minimum basin diameter	12"	12"	12"	12"
Pump Base & Volute	Thermoplastic	Cast Iron	Thermoplastic	Cast Iron
Impeller	Stainless Steel	Stainless Steel	Stainless Steel	Stainless Steel
Motor Shaft	Plated Steel	Stainless Steel	Plated Steel	Stainless Steel
Column	Thermoplastic	Stainless Steel	Thermoplastic	Stainless Steel
Float Ball	Thermoplastic	Stainless Steel	Thermoplastic	Stainless Steel
Float Rod Guide	Thermoplastic	Stainless Steel	Thermoplastic	Stainless Steel
Float Rod	Galvanized Steel	Stainless Steel	Galvanized Steel	Stainless Steel
Fasteners	Stainless Steel	Stainless Steel	Stainless Steel	Stainless Steel
Bearing - Sleeve Bearing	Bronze	Bronze	Bronze	Bronze
Warranty	1 Year	3 Years	1 Year	5 Years

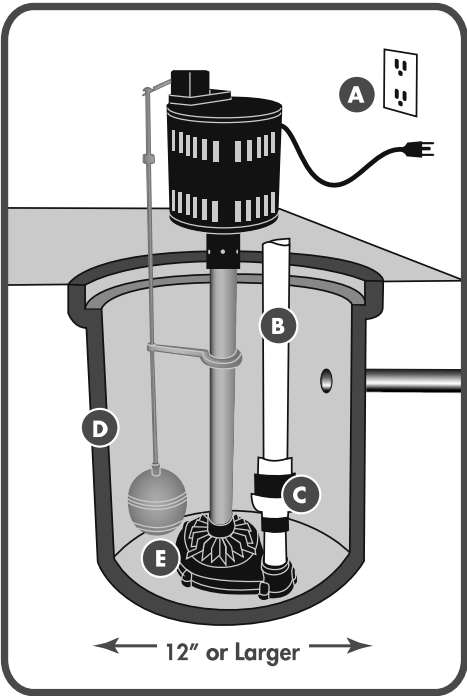
Assembly

FLOAT ASSEMBLY

- 1. Insert the float rod through the hole in the switch arm.
- 2. Push rubber grommet onto the float rod. **NOTE:** If necessary, use liquid soap to aid in the installation of the grommet.
- 3. Attach float rod guide to the pump column (models 92333 & 92553). On models 92301 & 92551 attach the float rod guide to the column but do not fully tighten the fastener at this time.
- 4. Insert the float rod through the float rod guide making sure the float rod is completely vertical and moves up and down freely
- 5. Thread the float ball onto the float rod. If necessary, hold the float rod with pliers to prevent the float rod from turning.
- 6. Once float rod is aligned, secure the float rod guide to the column by completely tightening the fastener. (Models 92301 & 92551 only).

Installation

- 1. Place the pump on a solid, level surface in the basin. Use bricks or blocks to raise the pump off the bottom surface. Do not place the pump directly in mud, sand, silt or on rocky surfaces as these materials can clog or cause damage the pump. Do not lower the pump into the basin by the power cord or discharge pipe.
- 2. Position the pump in the basin (D) making sure that the float ball can move up and down freely without coming in contact with the sides of the basin.
- 3. Connect the discharge pipe (B) to the pump discharge. **NOTE:** If using flexible discharge hose make sure the pump is secure to prevent pump movement and possible interference with the float.
- 4. Connect a check valve (C) (sold separately) to the discharge pipe. Make sure the check valve is installed in the correct direction of flow.
- 5. Connect remaining pipe to the pump. Ensure that the piping will carry the water away from the outside of the foundation.
- 6. A sump basin cover should be installed to prevent debris from falling into the basin.



Operation

- 1. Plug the power cord into a 120 volt grounded outlet. The use of a GFCI is strongly recommended.
- 2. Test your installation by filling the basin with water. Observe the float through at least one complete cycle to ensure it operates freely and does not contact the sides of the basin. If necessary, reposition the pump to ensure proper operation. Make any necessary adjustments to the grommet at this time to adjust the pumping level.
- 3. Your pump motor is thermally protected. The thermal overload protector will automatically shut down the pump in an overheat situation. The pump will reset itself once the pump cools down. This overload is designed as a safety device and it will fail after repeated use

Maintenance

⚠ DANGER Risk of electric shock. Always disconnect the power supply before attempting to install, service or perform maintenance on the pump.

⚠ WARNING All repairs must be made by an authorized service center.

- 1. There are no serviceable parts inside the motor. Do not disassemble the motor. If service is required, contact a qualified technician.
- 2. Periodically check the pump intake for obstructions. Clean if necessary.
- 3. Periodically check the sump basin for debris and sediment accumulation. Clean if necessary.
- 4. Inspect the impeller for signs of wear and obstructions.
- 5. Inspect the power cord for signs of damage or wear. Do not operate the pump if the cord is damaged or worn.
- 6. In applications where the pump may not activate for extended periods of time, it is recommended to cycle the pump at least once per month to ensure the pumping system is working properly when needed.

Performance

Height and/or piping restriction will reduce the pump output performance. See the performance chart below to ensure the pump will work in your application. Whenever possible use the same size or larger pipe as the pump discharge for optimum performance. Reducing the pipe size will not harm your pump; it will just reduce the output.

Model	Gallons per minute at listed discharge height					
	0'	5'	10'	15'	20'	25'
92333, 92301	50	45	38	35	15	0
92553, 92551	60	55	45	30	12	5